

40187 Viking 1F Housing



PRODUCT SPECS:

Carbon Steel High-Flow Housing

IN/OUT: Flanged

Dims: See Drawing

Weight: 111#

Number of Elements Used: 1

For use with elements:

30008, 30009, 30034, 30037,
30202, 30203, 30204, 30066,
30210

Maximum Working Pressure:

Up to 150 psi

Flow Range:

Up to 120 GPM

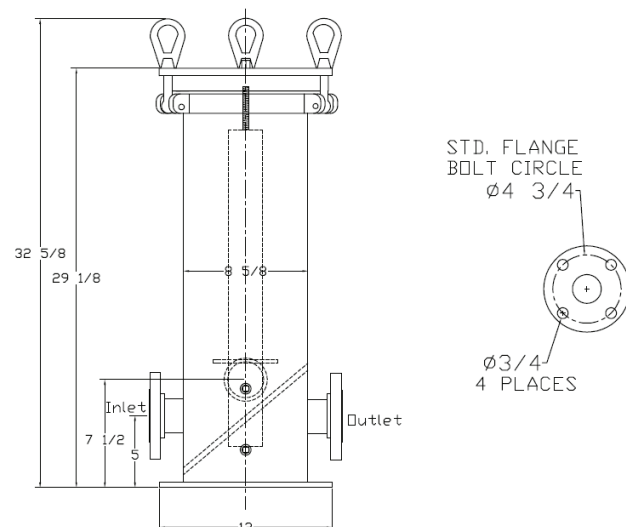
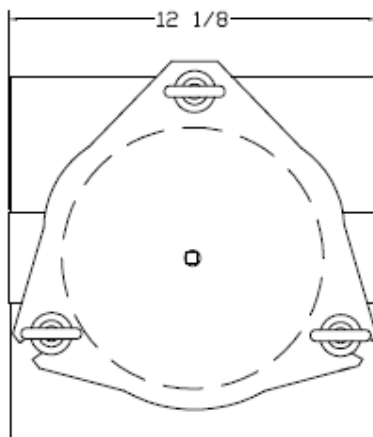
MADE IN USA



DESIGN FEATURES

- Epoxy coating inside and out
- For use with gasoline, diesel, biodiesel up to B100, ULSD, ethanol blends up to 15%, and industrial fluids such as lube oils, hydraulic oils, synthetic oils and many solvents
- Gauge ports standard (use part # 90601 OR 90603)

PRODUCT DRAWING



40189 Viking 2F Housing



PRODUCT SPECS:

Carbon Steel High-Flow Housing

IN/OUT: Flanged

Dims: See Drawing

Weight: 140#

Number of Elements Used: 2

For use with elements:

30008, 30009, 30034, 30037,
30202, 30203, 30204, 30066,
30210

Maximum Working Pressure:

Up to 150 psi

Flow Range:

Up to 150 GPM

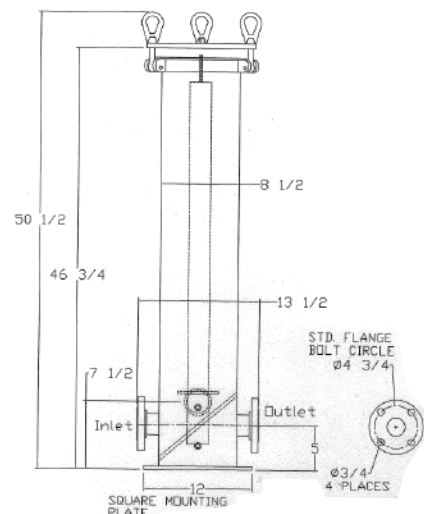
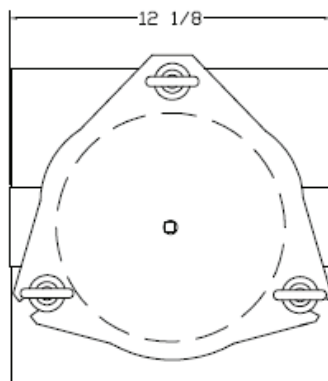
MADE IN USA



DESIGN FEATURES

- Epoxy coating inside and out
- For use with gasoline, diesel, biodiesel up to B100, ULSD, ethanol blends up to 15%, and industrial fluids such as lube oils, hydraulic oils, synthetic oils, and many solvents
- Gauge ports standard (use part # 90601 OR 90603)

PRODUCT DRAWING



40190 Viking 3F Housing



PRODUCT SPECS:

Carbon Steel High-Flow Housing

IN/OUT: Flanged

Dims: See Drawing

Weight: 600#

Number of Elements Used: 4

For use with elements:

30008, 30009, 30034, 30037,
30202, 30203, 30204, 30066,
30210

Maximum Working Pressure:

Up to 150 psi

Flow Range:

Up to 300 GPM

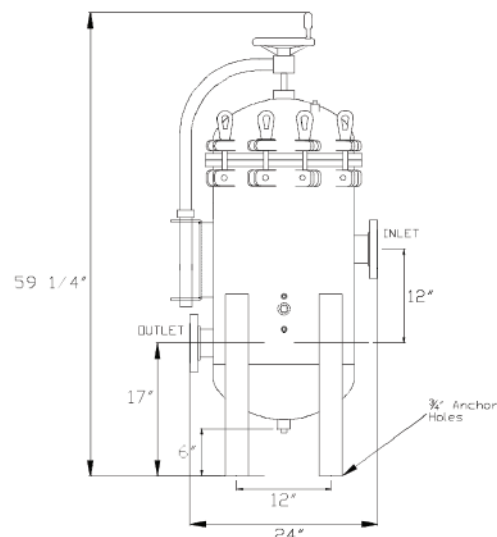
MADE IN USA



DESIGN FEATURES

- Epoxy coating inside and out
- For use with gasoline, diesel, biodiesel up to B100, ULSD, ethanol blends up to 15%, and industrial fluids such as lube oils, hydraulic oils, synthetic oils, and many solvents
- Gauge ports standard (use part # 90601 OR 90603)

PRODUCT DRAWING



40191 Viking 4F Housing



PRODUCT SPECS:

Carbon Steel High-Flow Housing

IN/OUT: Flanged

Dims: See Drawing

Weight: 775#

Number of Elements Used: 8

Compatible with elements:

30008, 30009, 30034, 30037,
30202, 30203, 30204, 30066,
30210

Maximum Working Pressure:

Up to 150 psi

Flow Range:

Up to 500 GPM

MADE IN USA



DESIGN FEATURES

- Epoxy coating inside and out
- For use with gasoline, diesel, biodiesel up to B100, ULSD, ethanol blends up to 15%, and industrial fluids such as lube oils, hydraulic oils, synthetic oils, and many solvents
- Gauge ports standard (use part # 90602)

PRODUCT DRAWING

